



University of Latvia as partner in Research and Innovation

M.Neimanis, A.Grzibovska, University of Latvia

BSUA 2012

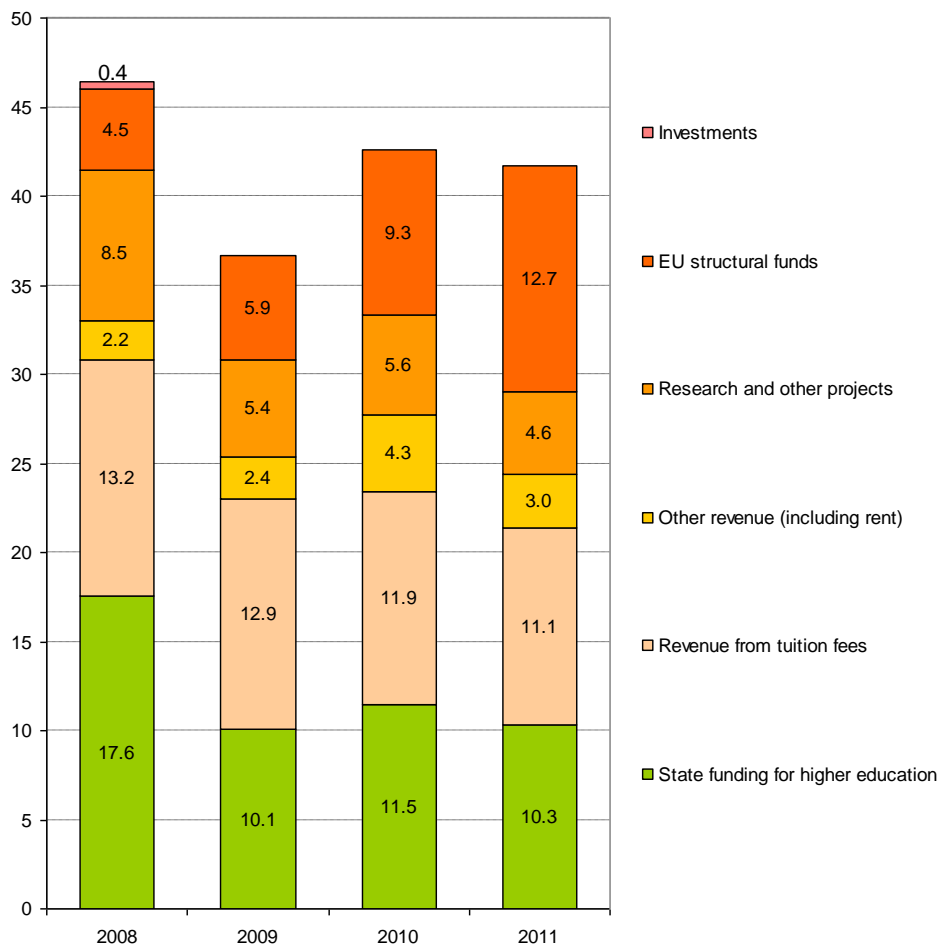
Gdansk, May 10-12



- General information about UL
- UL as partner in research
- UL as partner in technology transfer
- UL and Riga City as partners in New Academic Campus
- UL and RTU as partners in Technology based 'Green innovation' incubator

- Founded in 1919
- 13 faculties and 2 medical colleges
- 7 research institutes + 9 research institutes as University agencies
- Study programmes 154
- 14 024 full time students; 3601 part time students; (850 doctoral students)
- 3000 total staff, int.al. 800 academic staff
- Budget ~ 70 MEUR

Income structure of the UL budget, million LVL, 2008–2011



TODAY:

- Over 50 research fields which represent the humanities, sciences, social sciences, and education sciences
- Priority research areas:
 - Modeling of the processes and materials
 - ICT
 - Environment
 - Health

GOALS:

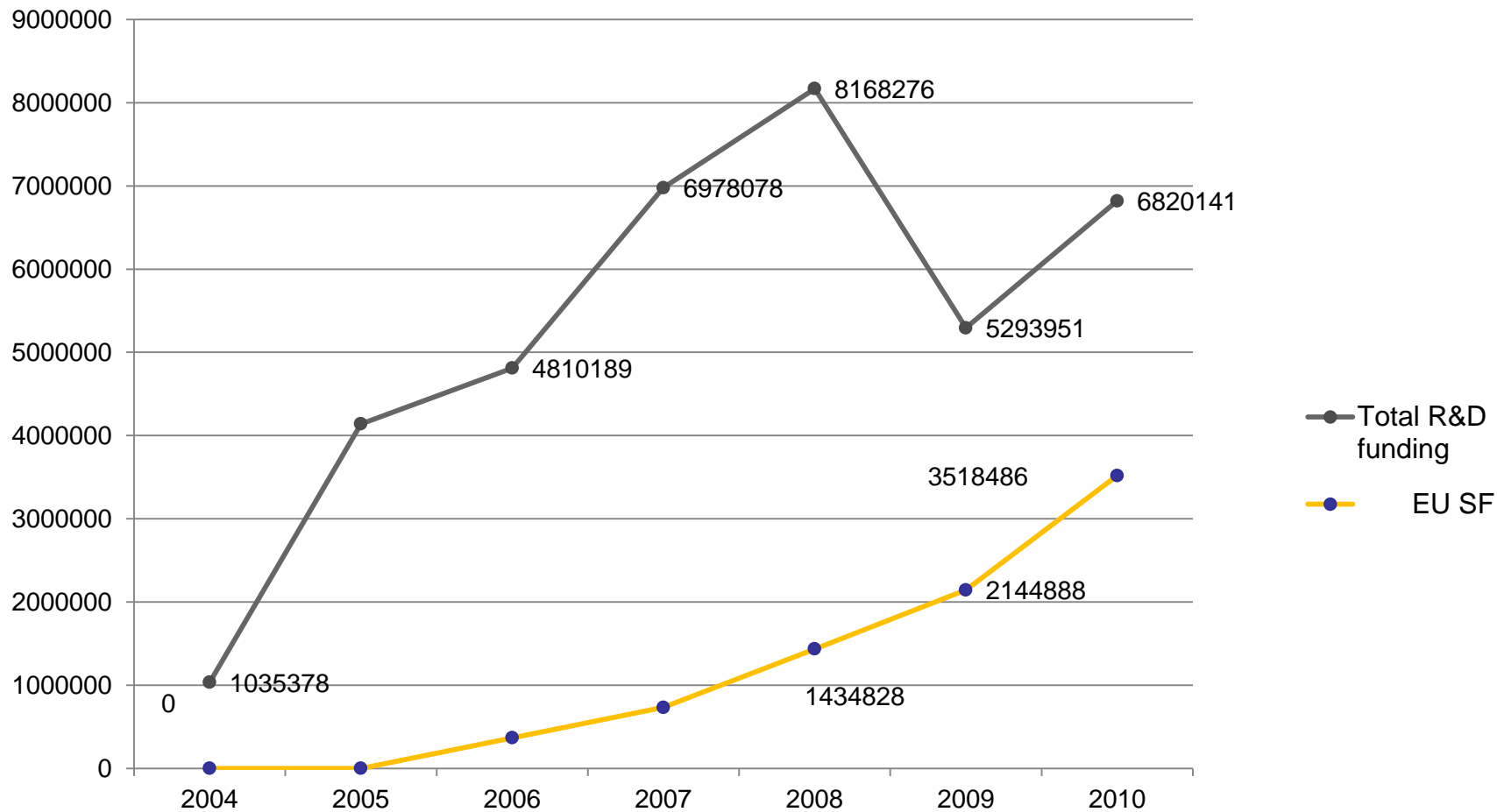
- Internationally recognized **research university** in Europe and worldwide;
- **Research based studies;**
- **One of the top 100 universities of Europe**

UL SCIENTIFIC PRIORITIES:

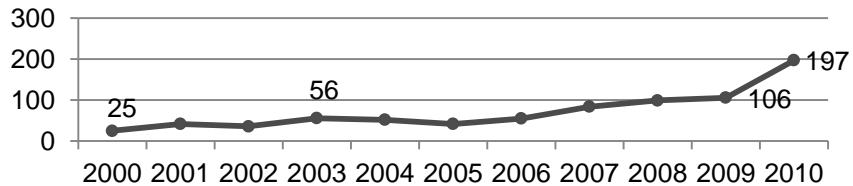
Over the period 2011-2016 the **priorities of scientific activities** are:

- support for the Latvian language and cultural studies;
- development of scientific activities within doctoral studies;
- support for doctoral schools;
- support for young researchers and new research teams;
- infrastructure development for scientific activities;
- support for commercialisation of the research results;
- support for science communication

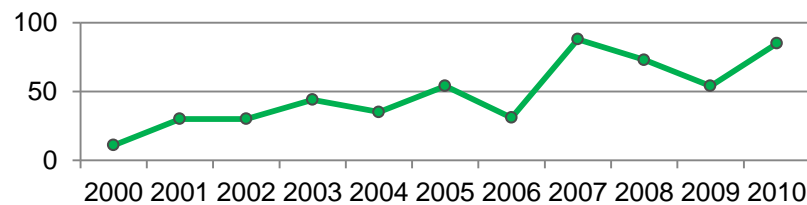
UL as partner in research



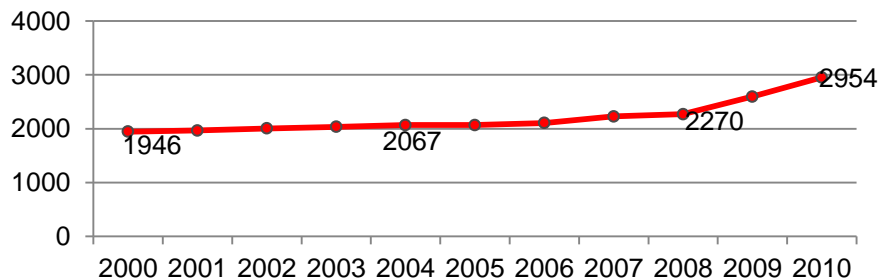
Scientific publications in *Web of Science* database



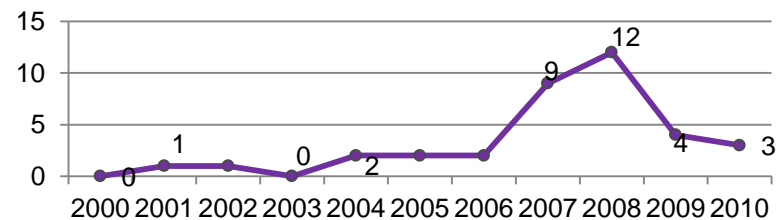
Dissertations



Total personnel



Patent applications





UL Innovation Centre (UL IC)/ Technology transfer contact point

- Since 2006, created as part of Ministry of Education and Science financed project to make technology transfer offices (TTO) network in Latvia
- Structural unit in UL Development and Planning department
- At present financed by ERDF and UL budget



- **Management of internal environment:**
 - IP management;
 - innovation support services to researchers;
 - internal communication;
 - researchers' training etc.
- **Marketing of university competences and services**
- **Supporting the development of innovative ideas**
- **Initiating commercialization processes**



MARKETING, IP AND RESEARCH RESULTS

- Date base of UL competencies - information about 82 groups of researchers
 - marketing tool for selling contract research projects
 - visits to every group of researchers
- Selecting ideas and technologies with commercial potential and creating commercialization proposals
- Organizing seminars for researchers and companies
- Company meetings with researchers for generating new ideas



- On 2008 UL Senate enacted **UL Industrial Property Policy**
 - Ownership of research results
 - Invention disclosure
 - Evaluation of inventions
 - Decision on claiming rights to invention
 - Agreement on commercial exploitation of invention
 - Protection of IPR
 - Remuneration to the inventor
- Recommendations for amendments in state regulations



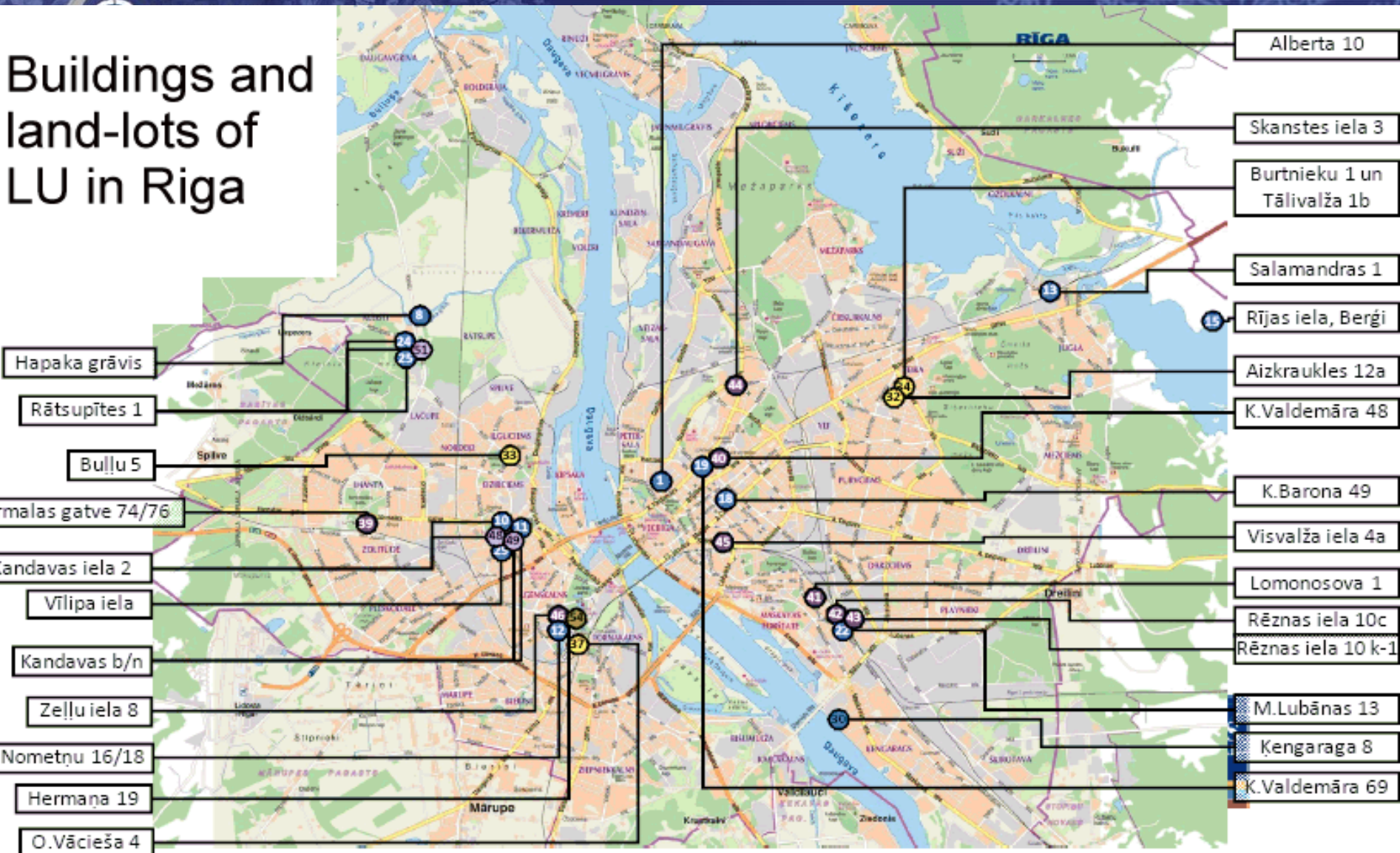
- Since November 2010 UL IC is participating in European Patent Office (EPO) **PATLIB pilot project**
- Offering search services to university staff and companies
- New services for the future:
 - patent statistical analyses
 - evaluation of economical potential of inventions

- Weak cooperation between industry and researchers
- Differences in academic and industry values
- Ownership of research results
- Impossible to commercialize ERDF co-financed «non-commercial» research projects
- Financing patent costs



UL and Riga City as partners in New Academic Campus

Buildings and land-lots of LU in Riga



Hapaka grāvis

Rātsupītes 1

Bullu 5

Ūrmalas gatve 74/76

Kandavas iela 2

Vīlpa iela

Kandavas b/n

Zelļu iela 8

Nometņu 16/18

Hermaņa 19

O.Vācieša 4

Alberta 10

Skanstes iela 3

Burtnieku 1 un
Tālivalža 1b

Salamandras 1

Rījas iela, Bergi

Aizkraukles 12a

K.Valdemāra 48

K.Barona 49

Visvalža iela 4a

Lomonosova 1

Rēznas iela 10c
Rēznas iela 10 k-1

M.Lubānas 13

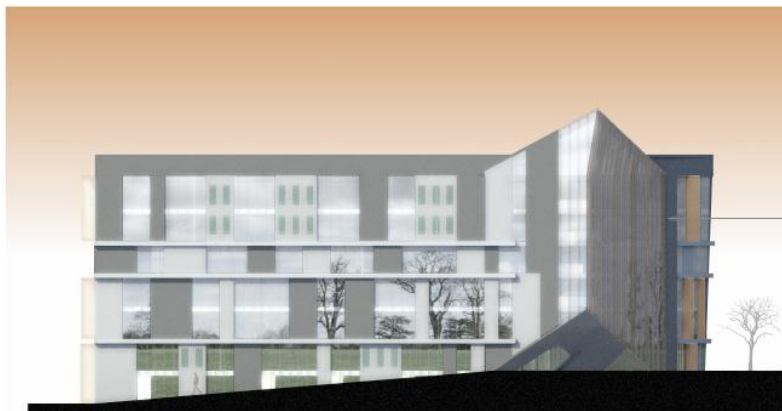
Ķengaraga 8

K.Valdemāra 69

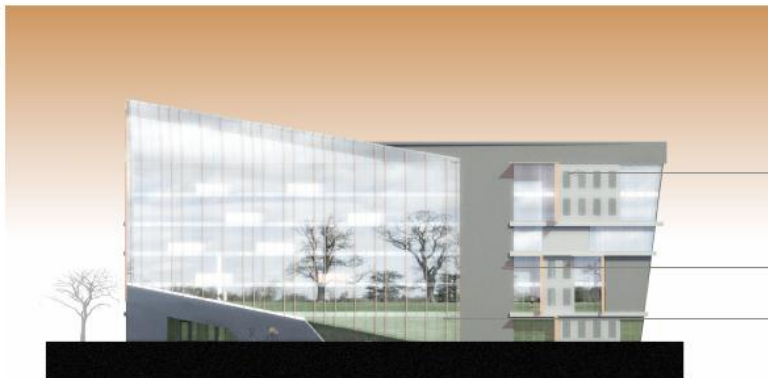


- There is a unique project under construction – the UL Academic Centre in Tornakalns with **modern infrastructure that meets the highest academic standards of the world's top universities** (buildings, equipment and facilities) for studies and research.
- Project`s 1st phase – Academic Centre of Natural sciences:
 - 33 MEUR (ERDF 80%); 01.04.10.-30.09.2014.;
19000 m²

Ziemeļu fasāde m1: 200



Rietumu fasāde m1: 200



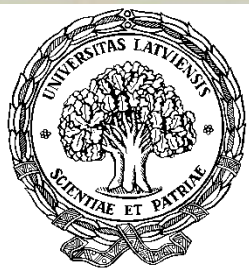


UL and RTU as partners in technology based ‘Green innovation’ incubator

- UL and RTU are cooperating in:
 - Founders of Latvian Technology park (1996)
 - 9 State significance research centers
 - Sustainable use of energy and environmental resources
 - Nanostructured and multifunctional materials
 - Pharmaceutical and biomedical research
 - ICT etc.
 - Competence Center of Environment, Bioenergetics and Biotechnology Ltd.
 - Technology transfer contact points
 - **Agreement between UL, RTU and Riga City council to create Riga Scientific Park (September 2011)**
 - **New campuses in *Left* side of Daugava**



- EEA and Norwegian Financial Mechanisms 2009-2014
- Established by University of Latvia, Riga Technical University and the Industrial Development Corporation of Norway – SIVA
- Project implementation: **December 2012** → April 2016
- Approximately 8 million EUR support for enterprises



UNIVERSITY of LATVIA